

State of Arizona Budget Request

State Agency

Constable Ethics Standards and Training Board

A.R.S. Citation: 22-137

Governor DUCEY:

This and the accompanying budget schedules, statements and explanatory information constitute the operating budget request for this agency for Fiscal Year 2022.

To the best of my knowledge all statements and explanations contained in the estimates submitted are true and correct.

Agency Head: **Scott Blake**

Title: **Chairman**

Non-Appropriated Funds

Total Amount Planned:

Constable Ethics Standards and Training - Program
Constable Ethics Standards and Training - Admin

| FY 2021 Expd. Plan | FY 2022 Fund. Issue | FY 2022 Total Budget |
|-----------------------|------------------------|-------------------------|
| 583.3 | 0.0 | 583.3 |
| 530.0 | 0.0 | 530.0 |
| 53.3 | 0.0 | 53.3 |

Scott Blake 9/1/2020

(signature)

Phone: **(602) 343-6280**

Prepared By: **Tracy Unmacht**

Email Address: **cestb@azcapitolconsulting.com**

Date Prepared: **Tuesday, September 01, 2020**

Total: 583.3 0.0 583.3

Revenue Schedule

Agency: Constable Ethics Standards and Training Board

Fund: CN2346 Constable Ethics Standards and Training - Program

| AFIS Code | Category of Receipt and Description | FY 2020 | FY 2021 | FY 2022 |
|--------------------|-------------------------------------|---------|---------|---------|
| 4449 | OTHER FEES | 346.1 | 362.2 | 362.2 |
| Fund Total: | | 346.1 | 362.2 | 362.2 |

Revenue Schedule

Agency: Constable Ethics Standards and Training Board

Fund: CN2347 Constable Ethics Standards and Training - Admin

| AFIS Code | Category of Receipt and Description | FY 2020 | FY 2021 | FY 2022 |
|--------------------|-------------------------------------|---------|---------|---------|
| 4449 | OTHER FEES | 84.9 | 90.5 | 90.5 |
| Fund Total: | | 84.9 | 90.5 | 90.5 |

Sources and Uses of Funds

| | |
|----------------|---|
| Agency: | Constable Ethics Standards and Training Board |
| Fund: | CN2346 Constable Ethics Standards and Training - Program |

| Cash Flow Summary | Actual FY 2020 | Estimate FY 2021 | Estimate FY 2022 |
|--------------------------------------|---------------------------|-----------------------------|-----------------------------|
| Balance Forward from Prior Year | 393.2 | 433.0 | 265.2 |
| Revenue (From Revenue Schedule) | 346.1 | 362.2 | 362.2 |
| Total Available | 739.3 | 795.2 | 627.4 |
| Total Appropriated Disbursements | 0.0 | 0.0 | 0.0 |
| Total Non-Appropriated Disbursements | 306.3 | 530.0 | 530.0 |
| Balance Forward to Next Year | 433.0 | 265.2 | 97.4 |

Non-Appropriated Expenditure

| Expenditure Categories | Actual FY 2020 | Estimate FY 2021 | Estimate FY 2022 |
|---|---------------------------|-----------------------------|-----------------------------|
| Personal Services | 0.0 | 0.0 | 0.0 |
| Employee Related Expenses | 0.0 | 0.0 | 0.0 |
| Prof. And Outside Services | 0.0 | 0.0 | 0.0 |
| Travel - In State | 0.0 | 0.0 | 0.0 |
| Travel - Out of State | 0.0 | 0.0 | 0.0 |
| Food | 0.0 | 0.0 | 0.0 |
| Aid to Organizations and Individuals | 306.3 | 530.0 | 530.0 |
| Other Operating Expenses | 0.0 | 0.0 | 0.0 |
| Equipment | 0.0 | 0.0 | 0.0 |
| Capital Outlay | 0.0 | 0.0 | 0.0 |
| Debt Service | 0.0 | 0.0 | 0.0 |
| Cost Allocation | 0.0 | 0.0 | 0.0 |
| Transfers | 0.0 | 0.0 | 0.0 |
| Expenditure Categories Total: | 306.3 | 530.0 | 530.0 |
| Cap Transfer due to Fund Balance | 0.0 | 0.0 | 0.0 |
| Residual Equity Transfer | 0.0 | 0.0 | 0.0 |
| Prior Commitments or Obligated Expenditures | 0.0 | 0.0 | 0.0 |
| Non Appropriated 27th Pay Roll | 0.0 | 0.0 | 0.0 |
| Non-Appropriated Expenditure Total: | 306.3 | 530.0 | 530.0 |
| Non-Appropriated FTE: | 0.0 | 0.0 | 0.0 |

Fund Description

OSPB: Revenues come from writ fees, which are set by the Board of Supervisors, and range in amount up to \$5.00. 80% of the fund's revenues are used to fund grants for training and equipment for constables and 20% of revenues may be used for administrative costs.

Sources and Uses of Funds

| | |
|----------------|---|
| Agency: | Constable Ethics Standards and Training Board |
| Fund: | CN2347 Constable Ethics Standards and Training - Admin |

| Cash Flow Summary | Actual FY 2020 | Estimate FY 2021 | Estimate FY 2022 |
|--------------------------------------|---------------------------|-----------------------------|-----------------------------|
| Balance Forward from Prior Year | 197.4 | 237.6 | 274.8 |
| Revenue (From Revenue Schedule) | 84.9 | 90.5 | 90.5 |
| Total Available | 282.3 | 328.1 | 365.3 |
| Total Appropriated Disbursements | 0.0 | 0.0 | 0.0 |
| Total Non-Appropriated Disbursements | 44.7 | 53.3 | 53.3 |
| Balance Forward to Next Year | 237.6 | 274.8 | 312.0 |

| Non-Appropriated Expenditure | Actual FY 2020 | Estimate FY 2021 | Estimate FY 2022 |
|---|---------------------------|-----------------------------|-----------------------------|
| Expenditure Categories | | | |
| Personal Services | 0.0 | 0.0 | 0.0 |
| Employee Related Expenses | 0.0 | 0.0 | 0.0 |
| Prof. And Outside Services | 35.9 | 41.6 | 41.6 |
| Travel - In State | 0.0 | 6.0 | 6.0 |
| Travel - Out of State | 0.0 | 0.0 | 0.0 |
| Food | 0.0 | 0.0 | 0.0 |
| Aid to Organizations and Individuals | 0.0 | 0.0 | 0.0 |
| Other Operating Expenses | 8.1 | 5.0 | 5.0 |
| Equipment | 0.7 | 0.7 | 0.7 |
| Capital Outlay | 0.0 | 0.0 | 0.0 |
| Debt Service | 0.0 | 0.0 | 0.0 |
| Cost Allocation | 0.0 | 0.0 | 0.0 |
| Transfers | 0.0 | 0.0 | 0.0 |
| Expenditure Categories Total: | 44.7 | 53.3 | 53.3 |
| Cap Transfer due to Fund Balance | 0.0 | 0.0 | 0.0 |
| Residual Equity Transfer | 0.0 | 0.0 | 0.0 |
| Prior Commitments or Obligated Expenditures | 0.0 | 0.0 | 0.0 |
| Non Appropriated 27th Pay Roll | 0.0 | 0.0 | 0.0 |
| Non-Appropriated Expenditure Total: | 44.7 | 53.3 | 53.3 |
| Non-Appropriated FTE: | 0.0 | 0.0 | 0.0 |

Fund Description

OSPB:

Summary of Expenditure and Budget Request for Selected Funds

| | |
|----------------|---|
| Agency: | Constable Ethics Standards and Training Board |
| Fund: | CN2346 Constable Ethics Standards and Training - Program (Non-Appropriated) |

| | FY 2020 Actual | FY 2021 Expd. Plan | FY 2022 Fund. Issue | FY 2022 Total Request |
|--|-------------------|-----------------------|------------------------|--------------------------|
| Cost Center/Program: | | | | |
| 1 Constable Ethics Standards and Training | 306.3 | 530.0 | 0.0 | 530.0 |
| | 306.3 | 530.0 | 0.0 | 530.0 |
| Expenditure Categories | | | | |
| Personal Services | 0.0 | 0.0 | 0.0 | 0.0 |
| Employee Related Expenses | 0.0 | 0.0 | 0.0 | 0.0 |
| Professional and Outside Services | 0.0 | 0.0 | 0.0 | 0.0 |
| Travel In-State | 0.0 | 0.0 | 0.0 | 0.0 |
| Travel Out of State | 0.0 | 0.0 | 0.0 | 0.0 |
| Food | 0.0 | 0.0 | 0.0 | 0.0 |
| Aid to Organizations and Individuals | 306.3 | 530.0 | 0.0 | 530.0 |
| Other Operating Expenses | 0.0 | 0.0 | 0.0 | 0.0 |
| Equipment | 0.0 | 0.0 | 0.0 | 0.0 |
| Capital Outlay | 0.0 | 0.0 | 0.0 | 0.0 |
| Debt Service | 0.0 | 0.0 | 0.0 | 0.0 |
| Cost Allocation | 0.0 | 0.0 | 0.0 | 0.0 |
| Transfers | 0.0 | 0.0 | 0.0 | 0.0 |
| Expenditure Categories Total: | 306.3 | 530.0 | 0.0 | 530.0 |
| Fund Total: | 306.3 | 530.0 | 0.0 | 530.0 |

Summary of Expenditure and Budget Request for Selected Funds

| | |
|----------------|---|
| Agency: | Constable Ethics Standards and Training Board |
| Fund: | CN2347 Constable Ethics Standards and Training - Admin (Non-Appropriated) |

| | FY 2020 Actual | FY 2021 Expd. Plan | FY 2022 Fund. Issue | FY 2022 Total Request |
|--|-------------------|-----------------------|------------------------|--------------------------|
| Cost Center/Program: | | | | |
| 1 Constable Ethics Standards and Training | 44.7 | 53.3 | 0.0 | 53.3 |
| | 44.7 | 53.3 | 0.0 | 53.3 |
| Expenditure Categories | | | | |
| Personal Services | 0.0 | 0.0 | 0.0 | 0.0 |
| Employee Related Expenses | 0.0 | 0.0 | 0.0 | 0.0 |
| Professional and Outside Services | 35.9 | 41.6 | 0.0 | 41.6 |
| Travel In-State | 0.0 | 6.0 | 0.0 | 6.0 |
| Travel Out of State | 0.0 | 0.0 | 0.0 | 0.0 |
| Food | 0.0 | 0.0 | 0.0 | 0.0 |
| Aid to Organizations and Individuals | 0.0 | 0.0 | 0.0 | 0.0 |
| Other Operating Expenses | 8.1 | 5.0 | 0.0 | 5.0 |
| Equipment | 0.7 | 0.7 | 0.0 | 0.7 |
| Capital Outlay | 0.0 | 0.0 | 0.0 | 0.0 |
| Debt Service | 0.0 | 0.0 | 0.0 | 0.0 |
| Cost Allocation | 0.0 | 0.0 | 0.0 | 0.0 |
| Transfers | 0.0 | 0.0 | 0.0 | 0.0 |
| Expenditure Categories Total: | 44.7 | 53.3 | 0.0 | 53.3 |
| Fund Total: | 44.7 | 53.3 | 0.0 | 53.3 |

Summary of Expenditure and Budget Request for Selected Funds

| | |
|----------------|---|
| Agency: | Constable Ethics Standards and Training Board |
| Fund: | CN2347 Constable Ethics Standards and Training - Admin (Non-Appropriated) |

| | FY 2020 Actual | FY 2021 Expd. Plan | FY 2022 Fund. Issue | FY 2022 Total Request | | | |
|--|-------------------|-----------------------|------------------------|--------------------------|--|--|--|
| Agency Total for Selected Funds | 351.0 | 583.3 | 0.0 | 583.3 | | | |

Program Group Summary of Expenditures and Budget Request for Selected Funds

| | |
|-----------------|---|
| Agency: | Constable Ethics Standards and Training Board |
| Program: | Constable Ethics Standards and Training |

| | FY 2020 Actual | FY 2021 Expd. Plan | FY 2022 Fund. Issue | FY 2022 Total Request |
|--|-------------------|-----------------------|------------------------|--------------------------|
|--|-------------------|-----------------------|------------------------|--------------------------|

| | |
|--------------|---|
| Fund: | CN2346-N Constable Ethics Standards and Training - Program (Non-Appropriated) |
|--------------|---|

Program Expenditures

| COST CENTER/PROGRAM BUDGET UNIT | | | | | |
|---------------------------------|---|-------|-------|-----|-------|
| 1-1 | Constable Ethics Standards and Training | 306.3 | 530.0 | 0.0 | 530.0 |
| | Total | 306.3 | 530.0 | 0.0 | 530.0 |

Non-Appropriated Funding

Expenditure Categories

| | | | | |
|--------------------------------------|-------|-------|-----|-------|
| Personal Services | 0.0 | 0.0 | 0.0 | 0.0 |
| Employee Related Expenses | 0.0 | 0.0 | 0.0 | 0.0 |
| Professional and Outside Services | 0.0 | 0.0 | 0.0 | 0.0 |
| Travel In-State | 0.0 | 0.0 | 0.0 | 0.0 |
| Travel Out of State | 0.0 | 0.0 | 0.0 | 0.0 |
| Food | 0.0 | 0.0 | 0.0 | 0.0 |
| Aid to Organizations and Individuals | 306.3 | 530.0 | 0.0 | 530.0 |
| Other Operating Expenses | 0.0 | 0.0 | 0.0 | 0.0 |
| Equipment | 0.0 | 0.0 | 0.0 | 0.0 |
| Capital Outlay | 0.0 | 0.0 | 0.0 | 0.0 |
| Debt Service | 0.0 | 0.0 | 0.0 | 0.0 |
| Cost Allocation | 0.0 | 0.0 | 0.0 | 0.0 |
| Transfers | 0.0 | 0.0 | 0.0 | 0.0 |
| Expenditure Categories Total: | 306.3 | 530.0 | 0.0 | 530.0 |
| Fund CN2346-N Total: | 306.3 | 530.0 | 0.0 | 530.0 |

Program Group Summary of Expenditures and Budget Request for Selected Funds

| | |
|-----------------|---|
| Agency: | Constable Ethics Standards and Training Board |
| Program: | Constable Ethics Standards and Training |

| | FY 2020 Actual | FY 2021 Expd. Plan | FY 2022 Fund. Issue | FY 2022 Total Request |
|--|-------------------|-----------------------|------------------------|--------------------------|
|--|-------------------|-----------------------|------------------------|--------------------------|

| | |
|--------------|---|
| Fund: | CN2347-N Constable Ethics Standards and Training - Admin (Non-Appropriated) |
|--------------|---|

Program Expenditures

| COST CENTER/PROGRAM BUDGET UNIT | | | | | |
|---------------------------------|---|------|------|-----|------|
| 1-1 | Constable Ethics Standards and Training | 44.7 | 53.3 | 0.0 | 53.3 |
| | Total | 44.7 | 53.3 | 0.0 | 53.3 |

Non-Appropriated Funding

Expenditure Categories

| | | | | |
|--------------------------------------|-------|-------|-----|-------|
| Personal Services | 0.0 | 0.0 | 0.0 | 0.0 |
| Employee Related Expenses | 0.0 | 0.0 | 0.0 | 0.0 |
| Professional and Outside Services | 35.9 | 41.6 | 0.0 | 41.6 |
| Travel In-State | 0.0 | 6.0 | 0.0 | 6.0 |
| Travel Out of State | 0.0 | 0.0 | 0.0 | 0.0 |
| Food | 0.0 | 0.0 | 0.0 | 0.0 |
| Aid to Organizations and Individuals | 0.0 | 0.0 | 0.0 | 0.0 |
| Other Operating Expenses | 8.1 | 5.0 | 0.0 | 5.0 |
| Equipment | 0.7 | 0.7 | 0.0 | 0.7 |
| Capital Outlay | 0.0 | 0.0 | 0.0 | 0.0 |
| Debt Service | 0.0 | 0.0 | 0.0 | 0.0 |
| Cost Allocation | 0.0 | 0.0 | 0.0 | 0.0 |
| Transfers | 0.0 | 0.0 | 0.0 | 0.0 |
| Expenditure Categories Total: | 44.7 | 53.3 | 0.0 | 53.3 |
| Fund CN2347-N Total: | 44.7 | 53.3 | 0.0 | 53.3 |
| Program 1 Total: | 351.0 | 583.3 | 0.0 | 583.3 |

Program Budget Unit Summary of Expenditures and Budget Request for Selected Funds

Agency: Constable Ethics Standards and Training Board

| FY 2020 Actual | FY 2021 Expd. Plan | FY 2022 Fund. Issue | FY 2022 Total Request |
|-------------------|-----------------------|------------------------|--------------------------|
|-------------------|-----------------------|------------------------|--------------------------|

Program: Constable Ethics Standards and Training

Fund: CN2346-N Constable Ethics Standards and Training - Program

Non-Appropriated

| | | | | | |
|--------------------------------|--------------------------------------|-------|-------|-----|-------|
| 6000 | Personal Services | 0.0 | 0.0 | 0.0 | 0.0 |
| 6100 | Employee Related Expenses | 0.0 | 0.0 | 0.0 | 0.0 |
| 6200 | Professional and Outside Services | 0.0 | 0.0 | 0.0 | 0.0 |
| 6500 | Travel In-State | 0.0 | 0.0 | 0.0 | 0.0 |
| 6600 | Travel Out of State | 0.0 | 0.0 | 0.0 | 0.0 |
| 6700 | Food | 0.0 | 0.0 | 0.0 | 0.0 |
| 6800 | Aid to Organizations and Individuals | 306.3 | 530.0 | 0.0 | 530.0 |
| 7000 | Other Operating Expenses | 0.0 | 0.0 | 0.0 | 0.0 |
| 8000 | Equipment | 0.0 | 0.0 | 0.0 | 0.0 |
| 8100 | Capital Outlay | 0.0 | 0.0 | 0.0 | 0.0 |
| 8600 | Debt Service | 0.0 | 0.0 | 0.0 | 0.0 |
| 9000 | Cost Allocation | 0.0 | 0.0 | 0.0 | 0.0 |
| 9100 | Transfers | 0.0 | 0.0 | 0.0 | 0.0 |
| Non-Appropriated Total: | | 306.3 | 530.0 | 0.0 | 530.0 |

Fund Total: 306.3 530.0 0.0 530.0

Fund: CN2347-N Constable Ethics Standards and Training - Admin

Non-Appropriated

| | | | | | |
|------|--------------------------------------|------|------|-----|------|
| 6000 | Personal Services | 0.0 | 0.0 | 0.0 | 0.0 |
| 6100 | Employee Related Expenses | 0.0 | 0.0 | 0.0 | 0.0 |
| 6200 | Professional and Outside Services | 35.9 | 41.6 | 0.0 | 41.6 |
| 6500 | Travel In-State | 0.0 | 6.0 | 0.0 | 6.0 |
| 6600 | Travel Out of State | 0.0 | 0.0 | 0.0 | 0.0 |
| 6700 | Food | 0.0 | 0.0 | 0.0 | 0.0 |
| 6800 | Aid to Organizations and Individuals | 0.0 | 0.0 | 0.0 | 0.0 |
| 7000 | Other Operating Expenses | 8.1 | 5.0 | 0.0 | 5.0 |
| 8000 | Equipment | 0.7 | 0.7 | 0.0 | 0.7 |
| 8100 | Capital Outlay | 0.0 | 0.0 | 0.0 | 0.0 |

Program Budget Unit Summary of Expenditures and Budget Request for Selected Funds

Agency: Constable Ethics Standards and Training Board

| FY 2020 Actual | FY 2021 Expd. Plan | FY 2022 Fund. Issue | FY 2022 Total Request |
|-------------------|-----------------------|------------------------|--------------------------|
|-------------------|-----------------------|------------------------|--------------------------|

Program: Constable Ethics Standards and Training

Fund: CN2347-N Constable Ethics Standards and Training - Admin

Non-Appropriated

| | | | | | |
|------|-----------------|-----|-----|-----|-----|
| 8600 | Debt Service | 0.0 | 0.0 | 0.0 | 0.0 |
| 9000 | Cost Allocation | 0.0 | 0.0 | 0.0 | 0.0 |
| 9100 | Transfers | 0.0 | 0.0 | 0.0 | 0.0 |

| | | | | | |
|--------------------------------|--|------|------|-----|------|
| Non-Appropriated Total: | | 44.7 | 53.3 | 0.0 | 53.3 |
|--------------------------------|--|------|------|-----|------|

| | | | | | |
|--------------------|--|------|------|-----|------|
| Fund Total: | | 44.7 | 53.3 | 0.0 | 53.3 |
|--------------------|--|------|------|-----|------|

| | | | | | |
|--|--|-------|-------|-----|-------|
| Program Total For Selected Funds: | | 351.0 | 583.3 | 0.0 | 583.3 |
|--|--|-------|-------|-----|-------|

Program Expenditure Schedule

| | |
|-----------------|--|
| Agency: | Constable Ethics Standards and Training Board |
| Program: | Constable Ethics Standards and Training |

| | FY 2020 Actual | FY 2021 Expd. Plan |
|--|---------------------------|-------------------------------|
| FTE | 0.0 | 0.0 |
| Expenditure Category Total | 0.0 | 0.0 |
| Personal Services | 0.0 | 0.0 |
| Boards and Commissions | 0.0 | 0.0 |
| Expenditure Category Total | 0.0 | 0.0 |
| Employee Related Expenses | 0.0 | 0.0 |
| Expenditure Category Total | 0.0 | 0.0 |
| Professional and Outside Services | | 41.6 |
| External Prof/Outside Serv Budg And Appn | 0.0 | |
| External Investment Services | 0.0 | |
| Other External Financial Services | 0.0 | |
| Attorney General Legal Services | 0.0 | |
| External Legal Services | 0.0 | |
| External Engineer/Architect Cost - Exp | 0.0 | |
| External Engineer/Architect Cost- Cap | 0.0 | |
| Other Design | 0.0 | |
| Temporary Agency Services | 0.0 | |
| Hospital Services | 0.0 | |
| Other Medical Services | 0.0 | |
| Institutional Care | 0.0 | |
| Education And Training | 0.0 | |
| Vendor Travel | 0.0 | |
| Professional & Outside Services Excluded from Cost Allocat | 0.0 | |
| Vendor Travel - Non Reportable | 0.0 | |
| External Telecom Consulting Services | 0.0 | |
| Costs related to those in custody of the State | 0.0 | |
| Non - Confidential Specialist Fees | 0.0 | |
| Confidential Specialist Fees | 0.0 | |
| Outside Actuarial Costs | 0.0 | |
| Other Professional And Outside Services | 35.9 | |
| Expenditure Category Total | 35.9 | 41.6 |
| Non-Appropriated | | |
| CN2347-N Constable Ethics Standards and Training - Admin (Non-Ap | 35.9 | 41.6 |
| | 35.9 | 41.6 |
| Fund Source Total | 35.9 | 41.6 |
| Travel In-State | 0.0 | 6.0 |
| Expenditure Category Total | 0.0 | 6.0 |
| Non-Appropriated | | |
| CN2347-N Constable Ethics Standards and Training - Admin (Non-Ap | 0.0 | 6.0 |
| | 0.0 | 6.0 |
| Fund Source Total | 0.0 | 6.0 |
| Travel Out of State | 0.0 | 0.0 |
| Expenditure Category Total | 0.0 | 0.0 |

Program Expenditure Schedule

| | |
|-----------------|--|
| Agency: | Constable Ethics Standards and Training Board |
| Program: | Constable Ethics Standards and Training |

| | FY 2020 Actual | FY 2021 Expd. Plan |
|--|---------------------------|-------------------------------|
| Food | 0.0 | 0.0 |
| Expenditure Category Total | 0.0 | 0.0 |
| <hr/> | | |
| Aid to Organizations and Individuals | 306.3 | 530.0 |
| Expenditure Category Total | 306.3 | 530.0 |
| Non-Appropriated | | |
| CN2346-N Constable Ethics Standards and Training - Program (Non- | 306.3 | 530.0 |
| Fund Source Total | 306.3 | 530.0 |
| <hr/> | | |
| Other Operating Expenses | | 5.0 |
| Other Operating Expenditures Budg Approp | 0.0 | |
| Other Operating Expenditures Excluded from Cost Allocati | 0.0 | |
| Risk Management Charges To State Agency | 1.3 | |
| Risk Management Deductible - Indemnity | 0.0 | |
| Risk Management Deductible - Legal | 0.0 | |
| Risk Management Deductible - Medical | 0.0 | |
| Risk Management Deductible - Other | 0.0 | |
| Gen Liab- Non Physical-Taxable- Self Ins | 0.0 | |
| Gross Proceeds Payments To Attorneys | 0.0 | |
| General Liability- Non-Taxable- Self Ins | 0.0 | |
| Medical Malpractice - Self-Insured | 0.0 | |
| Automobile Liability - Self Insured | 0.0 | |
| General Property Damage - Self- Insured | 0.0 | |
| Automobile Physical Damage-Self Insured | 0.0 | |
| Liability Insurance Premiums | 0.0 | |
| Property Insurance Premiums | 0.0 | |
| Workers Compensation Benefit Payments | 0.0 | |
| Self Insurance - Administrative Fees | 0.0 | |
| Self Insurance - Premiums | 0.0 | |
| Self Insurance - Claim Payments | 0.0 | |
| Self Insurance - Pharmacy Claims | 0.0 | |
| Premium Tax On Altcs | 0.0 | |
| Other Insurance-Related Charges | 0.0 | |
| Internal Service Data Processing | 0.0 | |
| Internal Service Data Proc- Pc/Lan | 0.0 | |
| External Programming-Mainframe/Legacy | 0.0 | |
| External Programming- Pc/Lan/Serv/Web | 0.0 | |
| External Data Entry | 0.0 | |
| Othr External Data Proc-Mainframe/Legacy | 0.0 | |
| Othr External Data Proc-Pc/Lan/Serv/Web | 0.0 | |
| Pmt for AFIS Development & Usage | 0.1 | |
| Internal Service Telecommunications | 0.0 | |
| External Telecom Long Distance-In-State | 0.0 | |
| External Telecom Long Distance-Out-State | 0.0 | |
| Other External Telecommunication Service | 0.0 | |
| Electricity | 0.0 | |
| Sanitation Waste Disposal | 0.0 | |
| Water | 0.0 | |
| Gas And Fuel Oil For Buildings | 0.0 | |

Program Expenditure Schedule

| | |
|-----------------|--|
| Agency: | Constable Ethics Standards and Training Board |
| Program: | Constable Ethics Standards and Training |

| | FY 2020 Actual | FY 2021 Expd. Plan |
|--|-------------------|-----------------------|
| Other Utilities | 0.0 | |
| Building Rent Charges To State Agencies | 0.0 | |
| Priv Lease To Own Bld Rent Chrgs To Agy | 0.0 | |
| Cert Of Part Bld Rent Chrgs To Agy | 0.0 | |
| Rental Of Land And Buildings | 0.0 | |
| Rental Of Computer Equipment | 0.0 | |
| Rental Of Other Machinery And Equipment | 0.0 | |
| Miscellaneous Rent | 0.0 | |
| Interest On Overdue Payments | 0.0 | |
| All Other Interest Payments | 0.0 | |
| Internal Acct/Budg/Financial Svcs | 6.0 | |
| Other Internal Services | 0.0 | |
| Repair And Maintenance - Buildings | 0.0 | |
| Repair And Maintenance - Vehicles | 0.0 | |
| Repair And Maint - Mainframe And Legacy | 0.0 | |
| Repair And Maint-Pc/Lan/Serv/Web | 0.0 | |
| Repair And Maintenance - Other Equipment | 0.0 | |
| Other Repair And Maintenance | 0.0 | |
| Software Support And Maintenance | 0.0 | |
| Uniforms | 0.0 | |
| Inmate Clothing | 0.0 | |
| Security Supplies | 0.0 | |
| Office Supplies | 0.0 | |
| Computer Supplies | 0.0 | |
| Housekeeping Supplies | 0.0 | |
| Bedding And Bath Supplies | 0.0 | |
| Drugs And Medicine Supplies | 0.0 | |
| Medical Supplies | 0.0 | |
| Dental Supplies | 0.0 | |
| Automotive And Transportation Fuels | 0.0 | |
| Automotive Lubricants And Supplies | 0.0 | |
| Rpr And Maint Supplies-Not Auto Or Build | 0.0 | |
| Repair And Maintenance Supplies-Building | 0.0 | |
| Other Operating Supplies | 0.0 | |
| Publications | 0.0 | |
| Aggregate Withheld Or Paid Commissions | 0.0 | |
| Lottery Prizes | 0.0 | |
| Lottery Distribution Costs | 0.0 | |
| Material for Further Processing | 0.0 | |
| Other Resale Supplies | 0.0 | |
| Loss On Sales Of Capital Assets | 0.0 | |
| Loss on Sales of Investments | 0.0 | |
| Employee Tuition Reimbursement-Graduate | 0.0 | |
| Employee Tuition Reimb Under-Grad/Other | 0.0 | |
| Conference Registration-Attendance Fees | 0.0 | |
| Other Education And Training Costs | 0.0 | |
| Advertising | 0.0 | |
| Sponsorships | 0.0 | |
| Internal Printing | 0.0 | |
| External Printing | 0.3 | |
| Photography | 0.0 | |

Program Expenditure Schedule

| | |
|-----------------|--|
| Agency: | Constable Ethics Standards and Training Board |
| Program: | Constable Ethics Standards and Training |

| | FY 2020 Actual | FY 2021 Expd. Plan |
|--|---------------------------|-------------------------------|
| Postage And Delivery | 0.4 | |
| Document shredding and Destruction Services | 0.0 | |
| Translation and Sign Language Services | 0.0 | |
| Distribution To State Universities | 0.0 | |
| Other Intrastate Distributions | 0.0 | |
| Awards | 0.0 | |
| Entertainment And Promotional Items | 0.0 | |
| Dues | 0.0 | |
| Books- Subscriptions And Publications | 0.0 | |
| Costs For Digital Image Or Microfilm | 0.0 | |
| Revolving Fund Advances | 0.0 | |
| Credit Card Fees Over Approved Limit | 0.0 | |
| Relief Bill Expenditures | 0.0 | |
| Surplus Property Distr To State Agencies | 0.0 | |
| Security Services | 0.0 | |
| Judgments - Damages | 0.0 | |
| ICA Payments to Claimants Confidential | 0.0 | |
| Jdgmnt-Confidential Restitution To Indiv | 0.0 | |
| Judgments - Non-Confidential Restitution | 0.0 | |
| Judgments - Punitive And Compensatory | 0.0 | |
| Pmts Made to Resolve/Disputes/Avoid Costs of Litigation | 0.0 | |
| Pmts For Contracted State Inmate Labor | 0.0 | |
| Payments To State Inmates | 0.0 | |
| Bad Debt Expense | 0.0 | |
| Interview Expense | 0.0 | |
| Employee Relocations-Nontaxable | 0.0 | |
| Employee Relocations-Taxable | 0.0 | |
| Non-Confidential Invest/Legal/Law Enf | 0.0 | |
| Conf/Sensitive Invest/Legal/Undercover | 0.0 | |
| Fingerprinting, Background Checks, Etc. | 0.0 | |
| Other Miscellaneous Operating | 0.0 | |
| Expenditure Category Total | 8.1 | 5.0 |
| Non-Appropriated | | |
| CN2347-N Constable Ethics Standards and Training - Admin (Non-Ap | 8.1 | 5.0 |
| Fund Source Total | 8.1 | 5.0 |
| Current Year Expenditures | | 0.7 |
| Capital Equipment Budget And Approp | 0.0 | |
| Vehicles Capital Purchase | 0.0 | |
| Vehicles Capital Leases | 0.0 | |
| Furniture Capital Purchase | 0.0 | |
| Depreciable Works Of Art & Hist Treas/Coll Capital Purchas | 0.0 | |
| Non Depr Works Of Art & Hist Treas/Coll Cap Purchase | 0.0 | |
| Furniture Capital Leases | 0.0 | |
| Computer Equipment Capital Purchase | 0.0 | |
| Computer Equipment Capital Lease | 0.0 | |
| Telecommunication Equip-Capital Purchase | 0.0 | |
| Telecommunication Equip-Capital Lease | 0.0 | |
| Other Equipment Capital Purchase | 0.0 | |
| Other Equipment Capital Leases | 0.0 | |

Program Expenditure Schedule

| | |
|-----------------|--|
| Agency: | Constable Ethics Standards and Training Board |
| Program: | Constable Ethics Standards and Training |

| | FY 2020 Actual | FY 2021 Expd. Plan |
|--|---------------------------|-------------------------------|
| Purchased Or Licensed Software-Website | 0.0 | |
| Internally Generated Software-Website | 0.0 | |
| Development in Progress | 0.0 | |
| Right-Of-Way/Easement/Extraction Rights | 0.0 | |
| Oth Int Assets purchased, licensed or internally generate | 0.0 | |
| Other intangible assets acquired by capital lease | 0.0 | |
| Other Capital Asset Purchases | 0.0 | |
| Leasehold Improvement-Capital Purchase | 0.0 | |
| Other Capital Asset Leases | 0.0 | |
| Non-Capital Equip Budget And Approp | 0.0 | |
| Vehicles Non-Capital Purchase | 0.0 | |
| Vehicles Non-Capital Leases | 0.0 | |
| Furniture Non-Capital Purchase | 0.0 | |
| Works Of Art And Hist Treas-Non Capital | 0.0 | |
| Furniture Non-Capital Leases | 0.0 | |
| Computer Equipment Non-Capital Purchase | 0.0 | |
| Computer Equipment Non-Capital Lease | 0.0 | |
| Telecomm Equip Non-Capital Purchase | 0.0 | |
| Telecomm Equip Non-Capital Leases | 0.0 | |
| Other Equipment Non-Capital Purchase | 0.0 | |
| Weapons Non-Capital Purchase | 0.0 | |
| Other Equipment Non-Capital Lease | 0.0 | |
| Purchased Or Licensed Software/Website | 0.7 | |
| Internally Generated Software/Website | 0.0 | |
| LICENSES AND PERMITS | 0.0 | |
| Right-Of-Way/Easement/Extraction Exp | 0.0 | |
| Other Intangible Assets - Purchased, Licensed or Internall | 0.0 | |
| Noncapital Software/Web By Capital Lease | 0.0 | |
| Other Intangible Assets Acquired by Capital Lease | 0.0 | |
| Other Long Lived Tangible Assets to be Expenses | 0.0 | |
| Non-Capital Equipment Excluded from Cost Allocation | 0.0 | |
| Expenditure Category Total | 0.7 | 0.7 |
| Non-Appropriated | | |
| CN2347-N Constable Ethics Standards and Training - Admin (Non-Ap | 0.7 | 0.7 |
| Fund Source Total | 0.7 | 0.7 |
| Capital Outlay | 0.0 | 0.0 |
| Expenditure Category Total | 0.0 | 0.0 |
| Debt Service | 0.0 | 0.0 |
| Expenditure Category Total | 0.0 | 0.0 |
| Cost Allocation | 0.0 | 0.0 |
| Expenditure Category Total | 0.0 | 0.0 |
| Transfers | 0.0 | 0.0 |
| Expenditure Category Total | 0.0 | 0.0 |

Program Expenditure Schedule

| | |
|----------|---|
| Agency: | Constable Ethics Standards and Training Board |
| Program: | Constable Ethics Standards and Training |

| | |
|-------------------|-----------------------|
| FY 2020 Actual | FY 2021 Expd. Plan |
|-------------------|-----------------------|

Administrative Costs

Agency: Constable Ethics Standards and Training Board

Administrative Costs Summary

| Common Administrative Area | FY 2021 |
|------------------------------------|-------------|
| Personal Services | 0.0 |
| ERE | 0.0 |
| All Other | 41.6 |
| Administrative Costs Total: | 41.6 |

Administrative Cost / Total Expenditure Ratio

| | Request | Admin % |
|----------------|---------|---------|
| FY 2021 | 583.3 | 7.1% |



**State of Arizona
Constable Ethics, Standards & Training Board**

September 1, 2020

To: State of Arizona Budget Office

Revenue Forecasting:

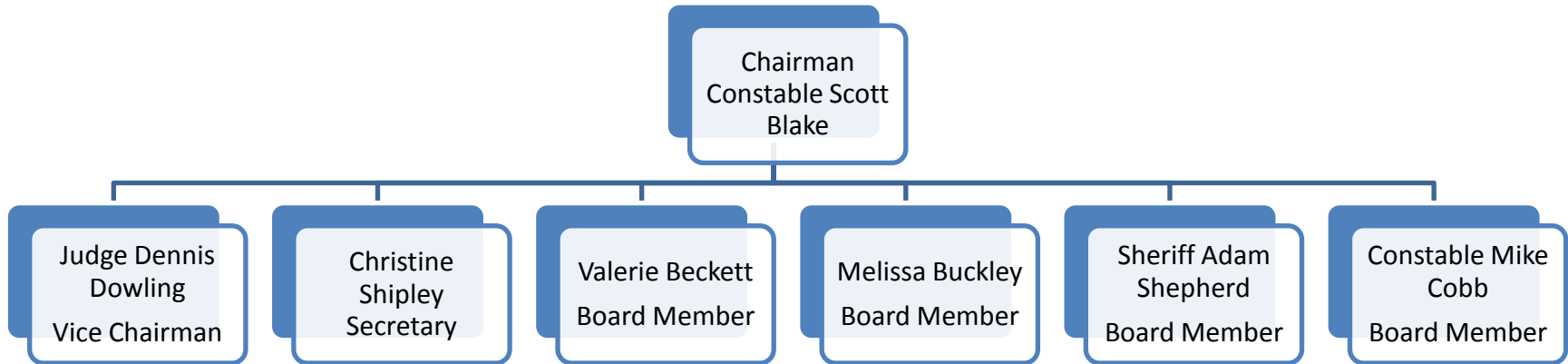
The Constable Ethics, Standards & Training Board (Board) receives all of its revenue from writ fees. This fee has remained fairly steady for many years. The number of writs issued has been steady as well, usually growing by a small amount each year, with an occasional decrease from time to time.

In the fall of 2018 a legislative change took affect defining how writ fees would be assessed, to broaden the scope. We saw increases in revenue toward the end of FY19, and total revenue for FY20 saw an increase in over 9%.

When calculating amounts for our estimated FY21 & FY22 revenue estimates, we used a similar revenue growth percentage and adjusted down slightly due to decreased number of writs issued during COVID period.

PO Box 13116. Phoenix, AZ 85002
Phone: (602) 343-6280 Fax: (602) 712-1252
cestb@azcapitolconsulting.com / <https://cestb.az.gov>

Constable Ethics, Standards & Training Board



Agency 5-Year Plan

Issue 1 Website

Description: Update website and maximise the capabilities

Solutions:

Staff to work with the Board to update the website and add new features to include training and complaint history database, historic documentation including board meeting agendas and minutes

Issue 2 Internal Policies and prcedures

Description: Revise the CAN internal policies and procedures

Solutions:

Staff to update and revise the internal policies and procedures on handling complaints, public records requests, grant process and general record keeping

Issue 3 Constable Code of Conduct

Description: Revise Constable Code of Conduct

Solutions:

Establish a subcommittee of membership to begin revision of 2009 constable code of conduct and present progress to the Board

Resource Assumptions

| | FY2023 Estimate | FY2024 Estimate | FY2025 Estimate |
|--------------------------------|-----------------|-----------------|-----------------|
| Full-Time Equivalent Positions | 0.0 | 0.0 | 0.0 |
| General Fund | 0.0 | 0.0 | 0.0 |
| Other Appropriated Funds | 0.0 | 0.0 | 0.0 |
| Non-Appropriated Funds | 0.0 | 0.0 | 0.0 |
| Federal Funds | 0.0 | 0.0 | 0.0 |

AGENCY SUMMARY

Program: CNA 0.0 CONSTABLE ETHICS STANDARDS AND TRAINING
Director: Scott Blake, Chairman
Phone: (602) 769-4488
Statute: A.R.S. § 22-136

Mission:

To set the professional standards for constables throughout Arizona, ensure that every constable is meeting his or her continuing education requirements, provide supplemental funding to counties for constable training and equipment, and investigate complaints against constables.

Description:

The Constable Ethics Standards & Training Board regulates constables, enforces a professional code of conduct for constables, and issues grants for constable training and equipment.

◆ **Goal:** 1 To investigate and resolve complaints against constables

Objectives: 1 2020 Obj: To ensure constables are adhering to adopted Code of Conduct for Constables

2021 Obj: To ensure constables are adhering to adopted Code of Conduct for Constables

2022 Obj: To ensure constables are adhering to adopted Code of Conduct for Constables

Performance Measures:

| | | | | | FY 2019 Actual | FY 2020 Estimate | FY 2020 Actual | FY 2021 Estimate | FY 2022 Estimate |
|----|-------------------------------------|-------------------------------------|----|---|-------------------|---------------------|-------------------|---------------------|---------------------|
| ML | Budget | Type | | | | | | | |
| 1 | <input checked="" type="checkbox"/> | <input type="checkbox"/> | IP | The number of complaints against constables received by the Board | 9 | 20 | 10 | 20 | 20 |
| 2 | <input checked="" type="checkbox"/> | <input type="checkbox"/> | OP | The number of complaints against constables resolved by the Board | 9 | 20 | 10 | 20 | 20 |
| 3 | <input checked="" type="checkbox"/> | <input checked="" type="checkbox"/> | IP | The number of constables | 94 | 94 | 91 | 91 | 91 |

◆ **Goal:** 2 To distribute grants for constable training & equipment

Objectives: 1 2020 Obj: To ensure constables have the proper training and equipment to perform their duties

2021 Obj: To ensure constables have the proper training and equipment to perform their duties

2022 Obj: To ensure constables have the proper training and equipment to perform their duties

Performance Measures:

| | | | | | FY 2019 Actual | FY 2020 Estimate | FY 2020 Actual | FY 2021 Estimate | FY 2022 Estimate |
|----|-------------------------------------|--------------------------|----|------------------------------|-------------------|---------------------|-------------------|---------------------|---------------------|
| ML | Budget | Type | | | | | | | |
| 1 | <input checked="" type="checkbox"/> | <input type="checkbox"/> | OC | The number of grants awarded | 19 | 30 | 22 | 30 | 30 |

◆ **Goal:** 3 To ensure compliance with constable training reporting requirements

Objectives: 1 2020 Obj: To ensure every constable is meeting their continuing education mandates

2021 Obj: To ensure every constable is meeting their continuing education mandates

2022 Obj: To ensure every constable is meeting their continuing education mandates

Performance Measures:

| | | | | | FY 2019 Actual | FY 2020 Estimate | FY 2020 Actual | FY 2021 Estimate | FY 2022 Estimate |
|----|-------------------------------------|-------------------------------------|----|--|-------------------|---------------------|-------------------|---------------------|---------------------|
| ML | Budget | Type | | | | | | | |
| 1 | <input checked="" type="checkbox"/> | <input type="checkbox"/> | IP | Number of constables reporting approved training | 94 | 94 | 91 | 91 | 91 |
| 2 | <input checked="" type="checkbox"/> | <input type="checkbox"/> | IP | Percentage of constable training hours reported on time (within 30 days of completion) | 100 | 100 | 100 | 100 | 100 |
| 3 | <input checked="" type="checkbox"/> | <input checked="" type="checkbox"/> | OP | Number of writs served | 78,375 | 78,000 | 90765 | 90000 | 90000 |

Budget Related Performance Measures

Constable Ethics Standards & Training Board

Agency: 0.0 CONSTABLE ETHICS STANDARDS AND TRAINING
Contact: Scott Blake, Chairman (602) 769-4488
2nd Contact: Scott Blake, Chairman (602) 769-4488
Statute: A.R.S. § 22-136

| ML | Budget | Type | Performance Measure | FY 2019 Actual | FY 2020 Estimate | FY 2020 Actual | FY 2021 Estimate | FY 2022 Estimate |
|-------------------------------------|-------------------------------------|------|--------------------------|-------------------|---------------------|-------------------|---------------------|---------------------|
| <input checked="" type="checkbox"/> | <input checked="" type="checkbox"/> | OP | Number of writs served | 78,375 | 78,000 | 90765 | 90000 | 90000 |
| <input checked="" type="checkbox"/> | <input checked="" type="checkbox"/> | IP | The number of constables | 94 | 94 | 91 | 91 | 91 |

CNA 0.0

Agency Summary**CONSTABLE ETHICS STANDARDS AND TRAINING**

Scott Blake, Chairman

(602) 769-4488

A.R.S. § 22-136

Mission:

To set the professional standards for constables throughout Arizona, ensure that every constable is meeting his or her continuing education requirements, provide supplemental funding to counties for constable training and equipment, and investigate complaints against constables.

Description:

The Constable Ethics Standards & Training Board regulates constables, enforces a professional code of conduct for constables, and issues grants for constable training and equipment.

◆ **Goal 1** To investigate and resolve complaints against constables

Objective: 1 FY2020: To ensure constables are adhering to adopted Code of Conduct for Constables

FY2021: To ensure constables are adhering to adopted Code of Conduct for Constables

FY2022: To ensure constables are adhering to adopted Code of Conduct for Constables

| Performance Measures | FY 2020 Actual | FY 2021 Estimate | FY 2022 Estimate |
|---|---------------------------|-----------------------------|-----------------------------|
| The number of complaints against constables received by the Board | 10 | 20 | 20 |
| The number of complaints against constables resolved by the Board | 10 | 20 | 20 |
| The number of constables | 91 | 91 | 91 |

◆ **Goal 2** To distribute grants for constable training & equipment

Objective: 1 FY2020: To ensure constables have the proper training and equipment to perform their duties

FY2021: To ensure constables have the proper training and equipment to perform their duties

FY2022: To ensure constables have the proper training and equipment to perform their duties

| Performance Measures | FY 2020 Actual | FY 2021 Estimate | FY 2022 Estimate |
|------------------------------|---------------------------|-----------------------------|-----------------------------|
| The number of grants awarded | 22 | 30 | 30 |

◆ **Goal 3** To ensure compliance with constable training reporting requirements

Objective: 1 FY2020: To ensure every constable is meeting their continuing education mandates

FY2021: To ensure every constable is meeting their continuing education mandates

FY2022: To ensure every constable is meeting their continuing education mandates

| Performance Measures | FY 2020 Actual | FY 2021 Estimate | FY 2022 Estimate |
|--|---------------------------|-----------------------------|-----------------------------|
| Number of constables reporting approved training | 91 | 91 | 91 |
| Percentage of constable training hours reported on time (within 30 days of completion) | 100 | 100 | 100 |
| Number of writs served | 90765 | 90000 | 90000 |